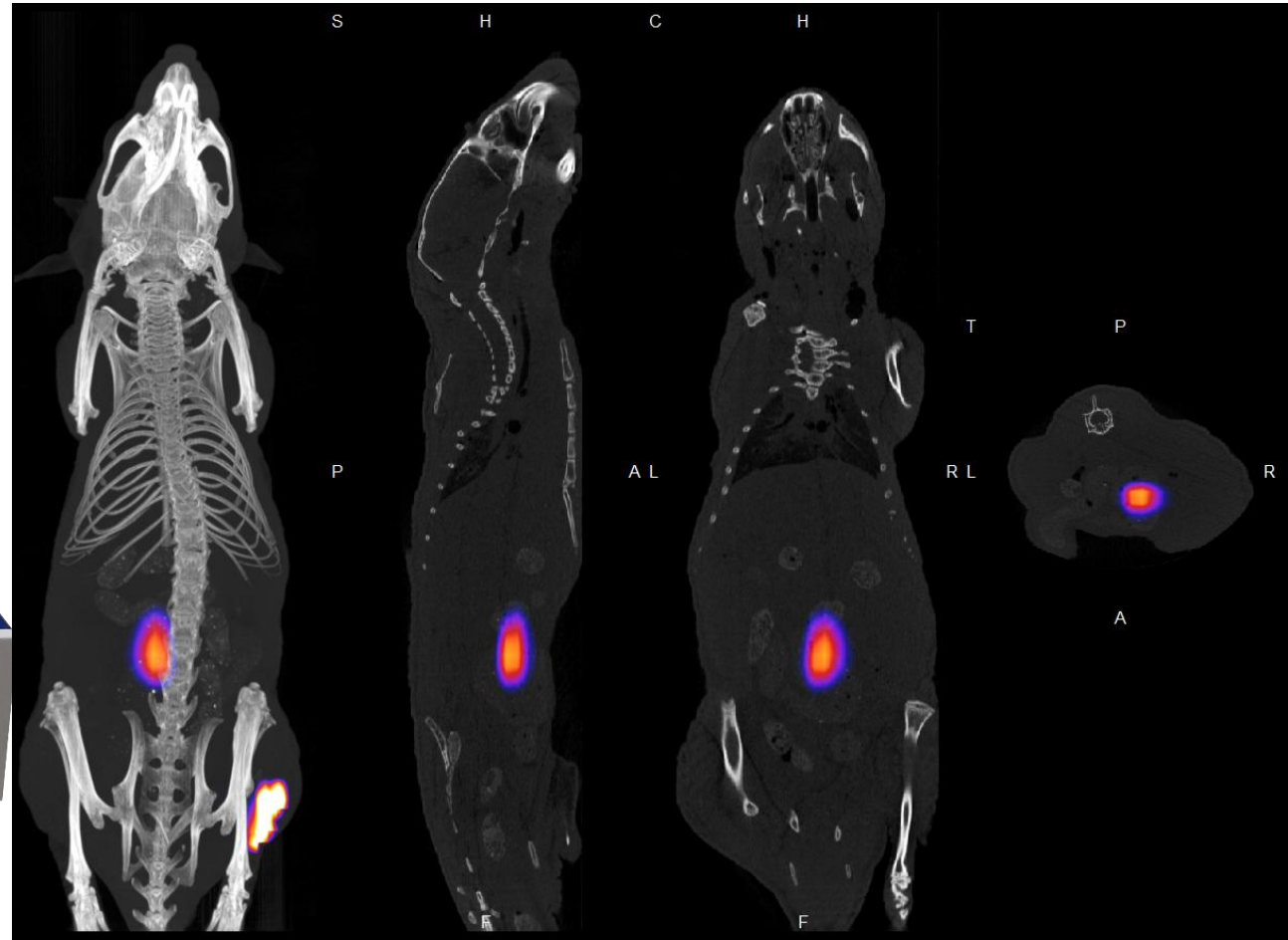


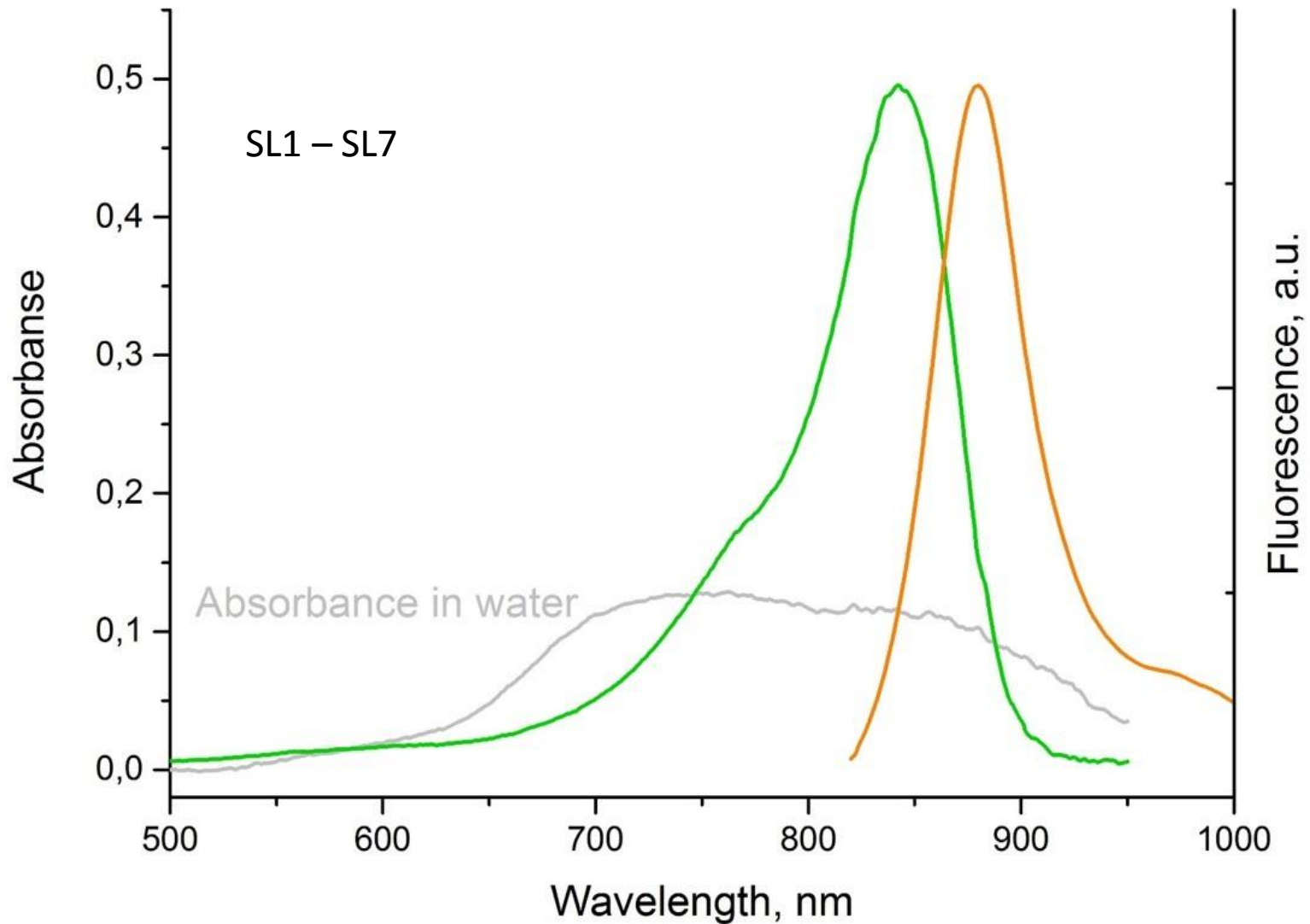
POLYMETHINE DYES AS FLUORESCENT PROBE
OF NEAR IR RANGE FOR BIOIMAGING

Presented by
Jānis Kūka, Tatiana Borisova, Maija Dambrova,
Illia Sharanov, Yurii Slominskii, Alexander Ishchenko

InSyTe FLECT/CT bioimaging system

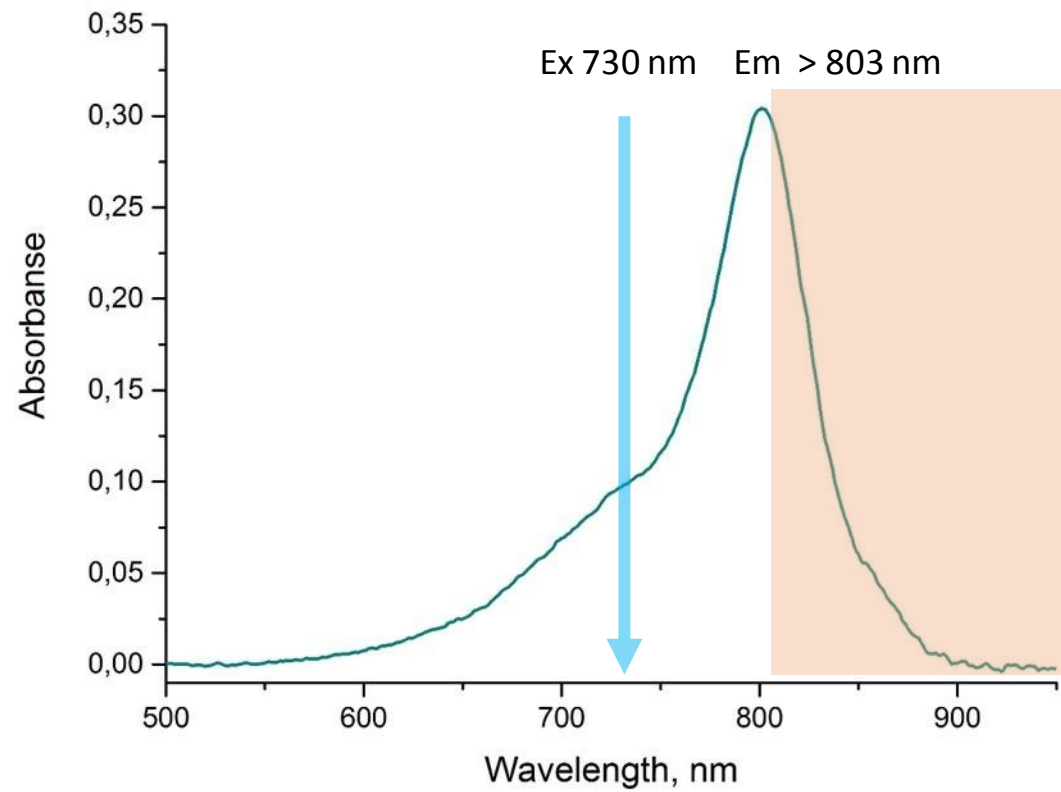


The spectral and fluorescent properties of new probes in media of different polarity and viscosity

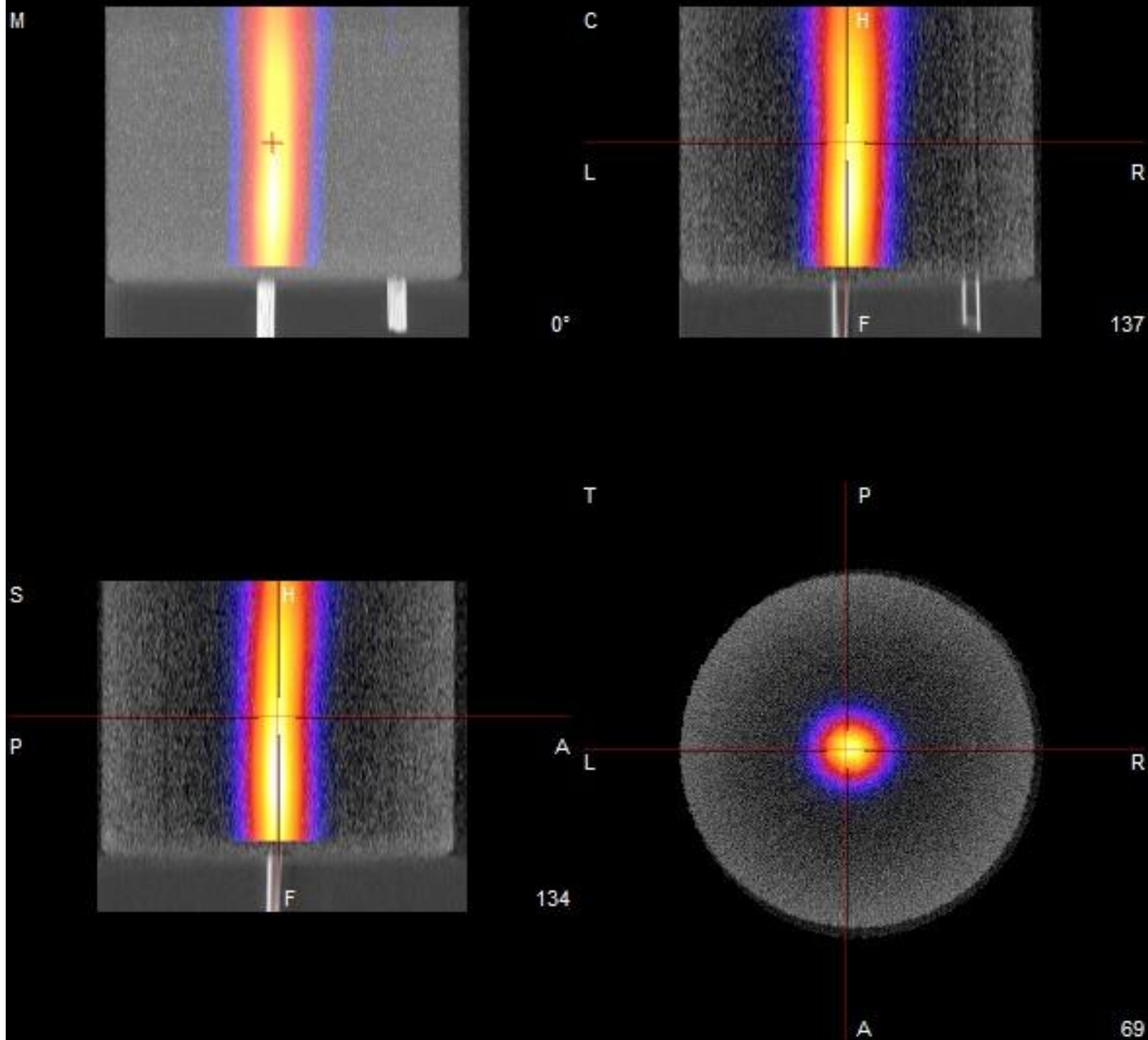


Grey – absorbance in water, Green – excitation spectrum in DMSO, Orange – emission spectrum in DMSO

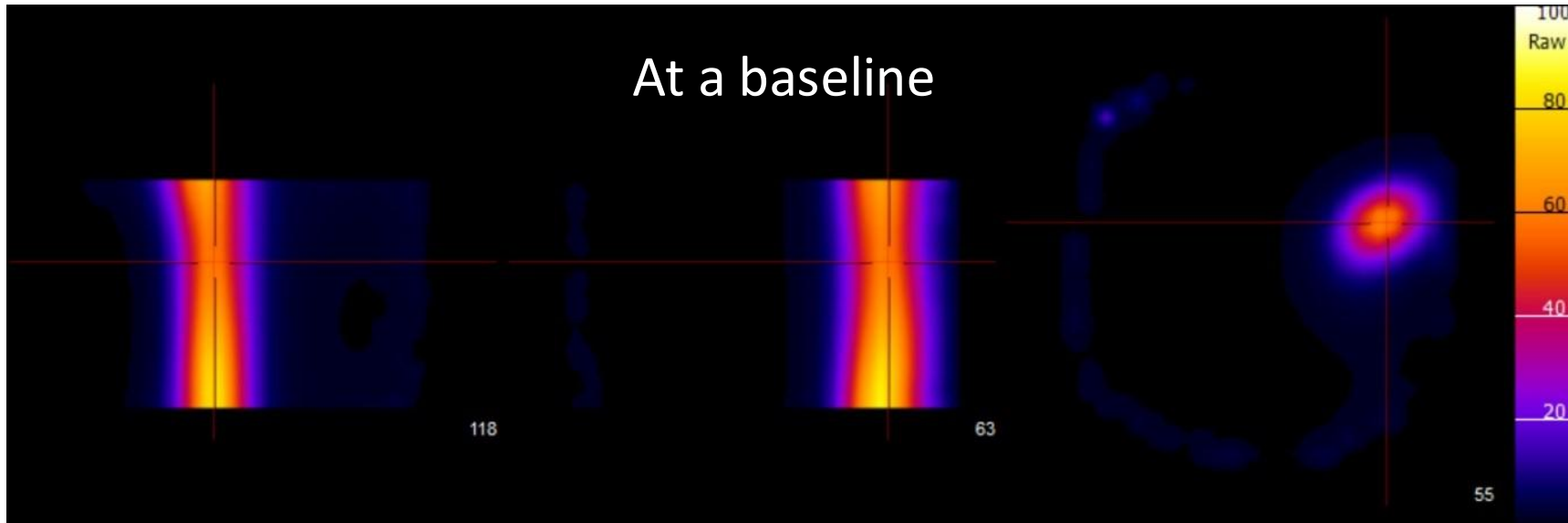
InSyTe FLECT/CT imaging configuration



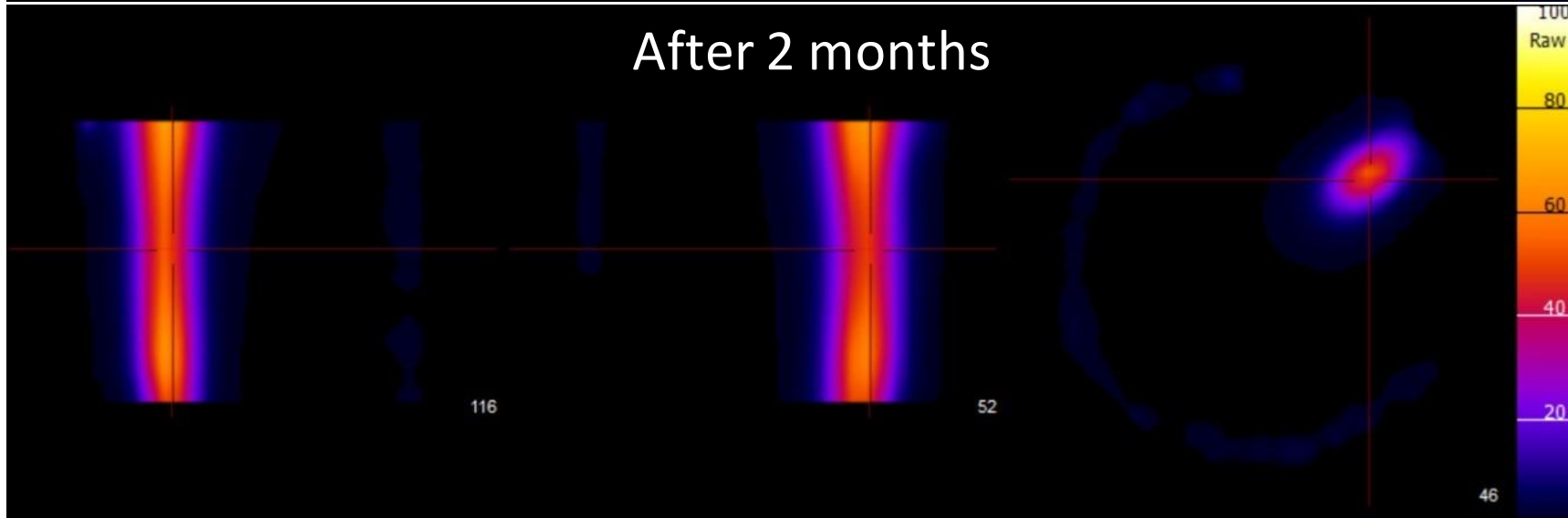
For excitation 730 nm laser was used and 803/813nm filter was selected



Stability and long-term use study



SL7 end concentration 100 μM



Fluorescent signal intensity for compound **SL7** in phantom. TIRF image was acquired using 705 nm laser and 813 nm filter combination.

Thank you for your attention!